

MEDIA CONTACT:

Jeong-ok Jeon 703-507-0864 [jeongok.jeon@projectandini.org](mailto:jeongok.jeon@projectandini.org) / Jammie Chang 301-755-4428 [jammiechang@gmail.com](mailto:jammiechang@gmail.com)

---

For Immediate Release

August 11, 2010

## Puzzling (a) Space

**Soun Hong, Chakraphan Rangaratna, Ding Ren, and Eric De Leon Zamuco**

Hosted by **Hillyer Art Space**, International Arts & Artists ([www.artsandartists.org](http://www.artsandartists.org))

Presented by **Project Andini** ([www.projectandini.org](http://www.projectandini.org))

Sponsored by **Arts Council Korea** ([www.arko.or.kr](http://www.arko.or.kr))

Co-curated by **Jeong-ok Jeon & Jammie Chang**



**On View:** September 3 – October 22, 2010

**Gallery Hours and Location:** Hillyer Art Space, Mon. 10-5 | Tues.-Fri. 10-7 | Sat. 11-4

9 Hillyer Court, NW, Washington, DC 20008 | 202.338.0680

### Events

**- Opening Receptions:**

Sept. 3, 6pm-9pm (Open to public)

Oct. 1, 6pm-9pm (Open to public)

**- Artist Talk:**

Sept. 4, 2pm-3pm (Open to public)

**- Art-making Workshop** in collaboration with Children's Art Studio:

Oct. 2, 1pm-3:30pm (RSVP. Limited seats open to public)

**- Youth Lecture Program** in collaboration with OpenArt Studio:

Oct. 16, 11am-12:30pm (RSVP. Limited seats open to public)

**- Thank-You Gathering** for Puzzling (a) Space VIPs:

Oct. 22, 6pm-8pm (Private)

Please **DOWNLOAD High Resolution Images** at <http://www.projectandini.org/gallery/v/puzzling-a-space/>

Join us at [www.facebook.com/projectandini](http://www.facebook.com/projectandini)

**Washington, DC – August 2, 2010:** Hillyer Art Space and Project Andini are pleased to announce ***Puzzling (a) Space***, a site-specific exhibition of painting, installation, video and performance by four contemporary Asian artists: Soun Hong (Korean), Chakraphan Rangaratna (Thai), Ding Ren (Chinese American), and Eric De Leon Zamuco (Filipino). This exhibition is co-curated by Jeong-ok Jeon (Korean) and Jammie Chang (Taiwan), and as a collaborative project it will bring dynamic cultural perspectives to the District arts community and increase the cultural exchange between Asia and the U.S.

***Puzzling (a) Space*** begins with the concept of site-specific art, the notion that an artwork comes to life within the exhibition space and an audience's participation is similarly an essential component to the artworks' realization. The place is not just a backdrop or a simple space to contain the artwork. Rather, the place conveys the purpose and acts as a vehicle for the art, just as the audience's interaction acts as a catalyst. Thus the artwork will only be complete in the context of three contributing elements: the artist, the place, and the audience.

***Puzzling (a) Space*** is a dynamic exhibition of paintings, videos, installations and performance that not only reflects the site-specificity of Hillyer Art Space and a multi-cultural aesthetic, it also creates an atmosphere for people to see themselves as an integral feature in the emergence of an artistic event.

The Korean artist, **Soun Hong**, presents *Sidescape*, a painting-installation series depicting devastating images of wars and calamities found on the Internet. As the title suggests, *Sidescape* portrays parts and margins of the media images that absurdly represent tranquil scenery. This new series exhibits the severe snowstorm that struck Washington, DC, early this year. By breaking down the images and randomly displaying them in the gallery space, Hong invites the audience to review the happening from different angles.

Thai artist **Chakraphan Rangaratna** creates artworks based on his travel experiences. In this exhibition, Rangaratna introduces full-color geometric shapes inspired by a trip to Mexico and transforms them into a mural installation, *My Ship Is Not Pretty*. The sense of joy originated from formal elements helps the audience participate in the exotic and festive atmosphere.

Chinese-American artist **Ding Ren**'s work resonates with the simplicity and nothingness in everyday life. Ren presents two videos titled *Reflected Light Series*. She documented the images of shadows and light that shed on the walls on a specific date and time and projects them on the corners in the gallery. The notion of corner also implies the artist's blurred identity between Asian and American.

Having relocated from the Philippines to the United States in 2005, **Eric De Leon Zamuco** has dealt with a sense of unfamiliarity to a new environment and an issue of identity as a new Filipino immigrant. For this exhibition, Zamuco makes a mixed-media installation titled *A Tale of Common Things* that breaks down the gallery space to reflect his paradoxical sense of the surroundings.

### **About the Artists**

**Soun Hong** was born in Busan, Korea and now residing/working in Seoul. He received MFA from Ecole National Supérieure des Beaux-Arts in 1989 and BFA from Busan National University in 1983 (Art education). His selected solo and group exhibitions of *Sidescape* were held at Space CAN in Seoul (2010), Artside, Beijing (2009), Santa Fe International Biennial in Santa Fe (2008), Busan International Biennale in Busan (2008), Neuer Kunstverein in Aschaffenburg, Germany (2007). His works have been collected by Gyeonggi Museum of

Modern Art (Korea), Santa Fe Art Institute (USA), Samsung Museum (Korea), Zenit (Germany), Ecole National Supérieure des Beaux-Arts (France), Issy-les-moulineaux Museum (France) and Seoul Metropolitan Museum (Korea). [www.sounhong.com](http://www.sounhong.com)

**Chakraphan Rangaratna** received his BFA in Fine Art at the Corcoran College of Art & Design in 2004. He attended the Skopelos Foundation for the Arts in Skopelos Island, Greece in 2003. He was a Teaching Assistant at the Corcoran College of Art & Design in the Printmaking Department, and is a Studio Assistant at the Hand Print Workshop International in Alexandria, Virginia. He has most recently participated in the exhibition *Give & Take/ Da y Toma* that is organized by Transformer (DC) and Garash Galeria (Mexico City) and *Screenprinting Today - A Regional Survey of Contemporary Screenprints and Related Works* at The Athenaeum, Alexandria (2009).

**Ding Ren** was born in Wuhan, China, currently living/working in Washington, DC as an artist and writer. She received MFA from GWU in 2009 (Studio Art) and BA from UMBC in 2005 (Photography and Art History). She is the finalist for 2010 Trawick Prize. She has shown her works through group exhibitions throughout the DC-metropolitan area at Area 405, Arlington Arts Center, Civilian Art Projects, Conner Contemporary Art, The Corcoran College of Art + Design, The Katzen Arts Center, Transformer Gallery, and Washington Project for the Arts, and solo exhibitions at Montpelier Arts Center and the University of Maryland Stamp Gallery. She participated as a writer in Maryland Art Place's Critic's Residency Program, and was mentored by New York-based art critics Eleanor Heartney and Irving Sandler in 2005. She has written for ArtVoices Magazine, Urbanite Magazine and Locus Art Magazine. Ren previously served as Contributing Editor for RADAR Review and as Program Director for Washington Project for the Arts. [www.dingren.com](http://www.dingren.com)

**Eric De Leon Zamuco** is a multi-disciplinary artist who relocated from Manila to Missouri in 2005 and is now living and working in Massachusetts. He received his MFA in sculpture with a minor in photography from the University of Missouri-Columbia in 2009. He is a recipient of the 2003 Cultural Center of the Philippines Thirteen Artist Award and the 2005 Ateneo Art Award. His works have been exhibited in Manila, Oslo, Vermont, New York, Michigan and St. Louis. He will have his sixth solo exhibition at the Silverlens Gallery in Manila in January 2011.

### **About the Curators**

**Jeong-ok Jeon** is the founder and director of Project Andini, an art collective based in Washington D.C. Her selected past positions include the guest curator of the US ASEAN Film & Photography Festival held in the National Geographic Society in Washington, DC (2006), the second curator at SSamzie Space in Seoul, Korea (2002-04), and the curatorial assistant for the Korean Pavilion Exhibition at the 50th Venice Biennale in Italy (2003). She holds an MFA in Fibers from Savannah College of Art and Design in Savannah, GA (2001) and a BFA in Fiber Arts from Ewha Womans University in Seoul, Korea (1997). She is currently pursuing her MA in Philosophy at George Mason University in Fairfax, VA.

**Jammie Chang** receives her Master of Arts Management at George Mason University in 2010. She is an independent curator with an interest of cultural exchange programs. She is also a freelance graphic designer

who has done projects with different teams. Chang worked as Scriptwriter and Production Manager in Imaging Image Production Ltd., a documentary production company in Taiwan. She volunteers at Ellipse Arts Center since 2008. She was an intern at the International Activities Office at the NEA and at Fine Arts Gallery at GMU in 2009.

#### **About Hillyer Art Space**

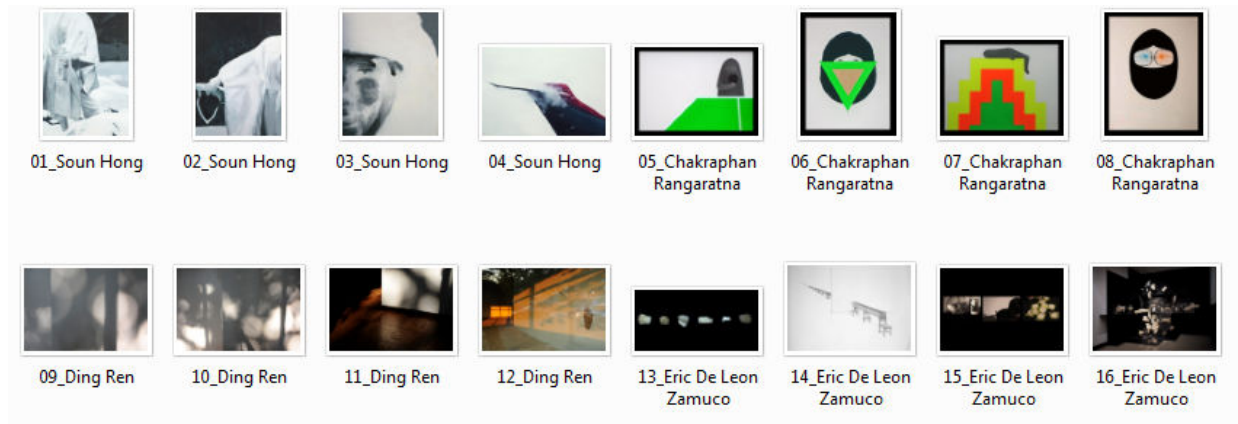
International Arts and Artists is a non-profit organization dedicated to promoting cross-cultural understanding and exposure to the arts internationally through exhibitions, programs and services to artists, arts institutions, and the public.

#### **About Project Andini**

Project Andini is an art collective dedicated to fostering better communication and interconnectedness between artists and the public through creative programs, curated contemporary art displays, and critical writings and forums.

# Image List

Please **DOWNLOAD High Resolution Images** at <http://www.projectandini.org/gallery/v/puzzling-a-space/>



01. Soun Hong | *Sidescape (Washington, DC. March 2. 2009 I)* | 2009 | 162 x 112 cm | oil on canvas
02. Soun Hong | *Sidescape (Washington, DC. March 2. 2009 III)* | 2009 | 162 x 112 cm | oil on canvas
03. Soun Hong | *Sidescape (Washington, DC. Feb. 2010-1)* | 2010 | 34.8 x 27.3 cm | oil on canvas
04. Soun Hong | *Sidescape (Washington, DC. Feb. 2010-11)* | 2010 | 24 x 33.4 cm | oil on canvas
05. Chakraphan Rangaratna | detail image of *My Ship Is Not Pretty* | 2009-10 | size variable | mixed media installation
06. Chakraphan Rangaratna | detail image of *My Ship Is Not Pretty* | 2009-10 | size variable | mixed media installation
07. Chakraphan Rangaratna | detail image of *My Ship Is Not Pretty* | 2009-10 | size variable | mixed media installation
08. Chakraphan Rangaratna | detail image of *My Ship Is Not Pretty* | 2009-10 | size variable | mixed media installation
09. Ding Ren | video still of *Reflected Light Series (18:13, 14.07.2010)* | 2010 | size variable | video installation
10. Ding Ren | video still of *Reflected Light Series (18:45, 14.07.2010)* | 2010 | size variable | video installation
11. Ding Ren | video still of *Reflected Light Series (18:46, 14.07.2010)* | 2010 | size variable | video installation
12. Ding Ren | inspiration of *Reflected Light Series* | 2010
13. Eric De Leon Zamuco | detail of *A Tale of Common Things* | 2010 | size variable | soap, light, Plexiglas, toddler chairs and wood
14. Eric De Leon Zamuco | sketch of *A Tale of Common Things* | 2010 | size variable | soap, light, Plexiglas, toddler chairs and wood
15. Eric De Leon Zamuco | video still of *Goldilocks Principle* | 2009 | 33min. | Video performance, single channel video
16. Eric De Leon Zamuco | *Sacred Raiment* | 2009 | size variable | rawhide dog treats, Plexiglas, stainless steel, wood, paint